

2024

ACCESSORIES CATALOGUE

tediselmedical
AN EXPERT INSIGHT INTO **HOSPITAL EQUIPMENT**



1.INTRODUCTION

HEALTHCARE ACCESSORIES FOR HOSPITALIZATION,
CRITICAL AREAS, OPERATION THEATERS, ETC

tediselmedical

ESTABLISHED IN 1995
FROM BARCELONA TO THE WORLD
IN MORE THAN 80 COUNTRIES

Manufacturing since 1995

We manufacture medical equipment for patient wards, critical areas, and operation room

Tedisel Medical is internationally known for its large variety and adaptability of its products. Especially for manufacturing Bed Head Units, ICU bridges, Pendants, Panels and Software for the Operation Theatre.

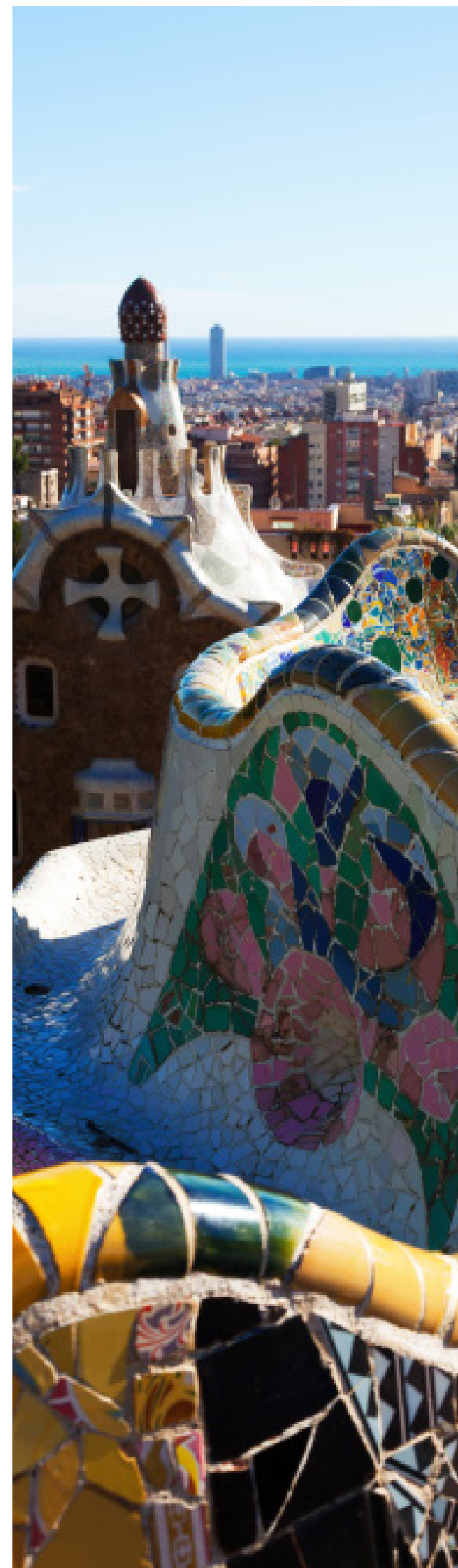
Our products are at the service of thousands of public and private hospitals in the world.

We provide advice and guidance through ergonomic and efficient designs for each specific area. We make sure to always focus on the comfort of the patient, the medical team and the technical service.

Our success story for a safe, efficient and high quality product, is based on continuous investment in talents, R&D, machines and technology.

DESIGN, EFFICIENCY AND ADAPTABILITY

**Technological leaders in the
hospital sector**





1	TECHNICAL RAILS	p. 6 - 7
1.1	MEDICAL RAIL	7
2	POLES.....	p. 8- 17
2.1	IV POLE WITH 4 HOOKS.....	9
2.2	ICU UNIT	10
2.3	INFUSION POLE WITH 2 WALL BRACKETS.....	11
2.4	INFUSION ROD	12
2.5	INFUSION POLE STRAIGHT	13
2.6	INFUSION POLE 55° ANGLED.....	14
2.7	INFUSION POLE 90° ANGLED.....	15
2.8	INFUSION POLE ANGLED.....	16
2.9	INFUSION POLE WITH INTEGRATED PULL-OUT STOPPER	17
3.	INFUSION AND PUMP CARRIER SYSTEMS.....	p. 18 - 24
3.1	INFUSION CARRIER SYSTEM.....	19
3.2	INFUSION CARRIER SYSTEM DOUBLE.....	20
3.3	DEVICE CARRIER SYSTEM.....	21
3.4	EQUIPMENT CARRIER SYSTEM.....	22
3.4	EQUIPMENT CARRIER TUBE	23
3.6	DEVICE CARRIER TUBE.....	24
4	EXAMINATION LAMPS	p. 25 - 27
4.1	EXAMINATION LAMPS WITH SPRING ARM.....	26
4.2	EXAMINATION LAMPS DIN RAIL.....	27
5	WALL RAIL CART	p. 28 - 29
5.1	WALL RAIL CART WITH CARRIER TUBE	29
6	SUPPORT ARM FOR MONITOR	p. 30 - 40
6.1	SWIVEL ARM.....	31
6.2	SWIVEL ARM FOR INFUSION POLE.....	32
6.3	SWIVEL DOUBLE ARM FOR INFUSION POLE	33
6.4	SUPPORT ARM FOR MONITOR VESA 75/100 300MM.....	34
6.5	SUPPORT DOUBLE ARM VESA 75/100 300 + 300 MM.....	35
6.6	ADJUSTABLE SINGLE ARM VESA 75/100MM.....	36

6.7	ADJUSTABLE DOUBLE ARM VESA 75/100MM.....	37
6.8	SUPPORT ARM FOR MONITOR PIVOT 5"	38
6.9	SUPPORT DOUBLE ARM MONITOR 5"	39
6.10	DOUBLE ARM SUPPORT FOR MONITOR PHILIPS	40
7	TRAYS AND SHELFs.....	p. 41 - 47
7.1	STORAGE TRAY FOR MEDICAL RAIL.....	42
7.2	TRAY.....	43
7.3	DEVICE TRAY	44
7.4	SHELF WITH DRAWER.....	45
7.5	SHELF 2 DRAWERS.....	46
7.6	SHELFs WITHOUT DRAWER.....	47
8	BASKETS.....	p. 48 - 57
8.1	BASKET	49
8.2	BASKET WITH CLAMP.....	50
8.3	BASKET WITH 2 CLAMPS.....	51
8.4	CATHETER BASKET	52
8.5	CAHETER BASKET FOR MEDICAL RAIL.....	53
8.6	COMPLETE RUBBISH BAG HOLDER 320X160MM.....	54
8.7	BASKET FOR 5000C BOTTLE DIAMETER 90MM.....	55
8.8	COMPLETE RUBBISH BAG HOLDER DIAMETER 155MM.....	56
8.9	WASTE BAG HOLDER	57
9	ACCESSORIES	p. 58 - 70
9.1	EXTENSION CLAMP.....	59
9.2	UNIVERSAL CLAMP.....	60
9.3	MEDICAL RAIL FOR ROUND TUBE 38MM	61
9.4	MEDICAL RAIL 600MM.....	62
9.5	MEDICAL RAIL.....	63
9.6	MEDICAL RAIL DOUBLE SIDED 400MM.....	64
9.7	DOUBLE RAIL FOR ROUND TUBE 25MM.....	65
9.8	TUBE HOLDERS.....	66
9.9	HOLDER FOR CATHETER FOR 1 TUBE ONLY.....	67
9.10	POLYCARBONATE TUBE DIAMETER 52MM.....	68
9.11	HOOK STRIP.....	69
9.12	PUMP HOLDER.....	70

1. TECHNICAL RAILS

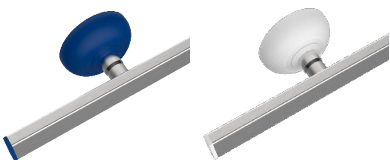
MEDICAL RAIL
Easy installation with
screw-on discs



Medical rail please specify desired length 18022

Material	Stainless steel
Cover an end caps	Plastic / black
Rail profile	25x10x1.5 mm
Load capacity	max. 100.0kg (per metre)
Surface	Sanded
Weight	Approx. 1.5kg (per metre)
Special feature	Special and in-between lengths are also possible (with 1 grounding fixation at each rail)

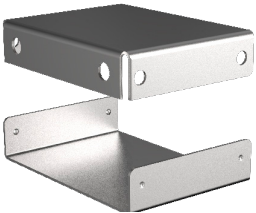
Plastic parts available in
white or blue colour
(Without extra cost)



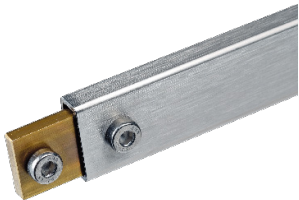
Optional cover in stain-
less steel (Subject to
surcharge)



Optional:
Adptable positioning
grounding box
(Subject to surcharge)



Connector



2. POLES

IV POLE

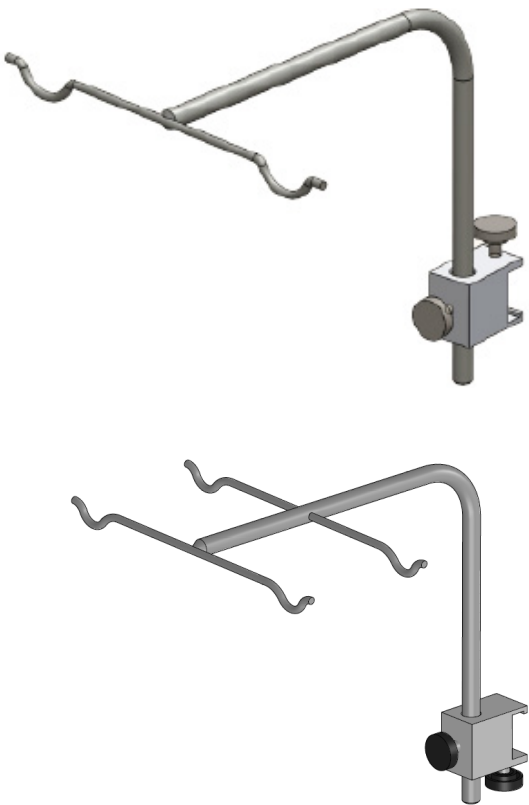
IV POLE 2 HOOKS:

For Technical Rail 15757

IV POLE 4 HOOKS:

For Horizontal Technical Rail 11908

For Vertical Technical Rail 20224



Material	Stainless steel
Weight	Approx.0.7kg
Length	250mm
Capacity Load	2kg per hook
Anchor	Can go to 25mm x 10mm technical bar or to 38mm Ø tube

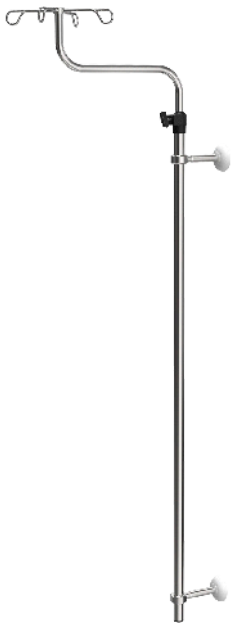
ICU UNIT
Height adjustment
comfort



With 4 hooks: For medical rail 15460
With 6 hooks: For medical rail 19944

Material	Stainless steel /Aluminium
Height adjustment	Single-handed system
Bottle bar	Stainless steel 4 or 6hooks - 2,0kg /hook
Regulating range	370mm
Total weight	Approx. 2,1 kg
Equipped with	Wall rail clampfor mounting on medical rail or with clamp for mounting round tube 25mm or 38mm

INFUSION POLE
With 2 wall brackets



91231

Material	Stainless steel
Tube diameter	25/18mm
Length of outer tube	1200mm
Colour of covers	White
Angled	2x90°
Parallel offset	300mm
Distance between wall and tube centre	120mm
Height adjustment	Screw system
Bottle holder	Stainless steel 4 hooks
Regulating range	Aprox.1460-2000mm
Load capacity	2.0 kg / hook
Total weight	2.5 kg

INFUSION ROD
Safe hooks acc. to standards

19411



Material	Stainless steel/ Aluminium
Tube diameter	25mm
Length	1500mm
Bottle bar	Stainless steel 4 hooks -2.0 kg / hook
Total weight	1.5kg
Equipped with	2 wall rail clamps , for mounting on medical rails 25x10mm

INFUSION POLE
Straight

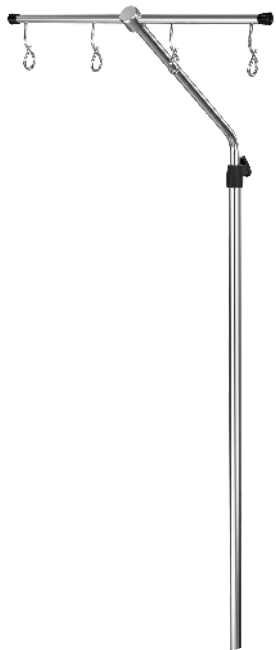
22984
29663



Material	Stainless steel
Tube diameter	25/18mm
Length of outer tube	1000mm
Height adjustment	Screw system and Single-handed system
Bottle holder	Stainless steel 4 safety hooks
Regulating range	Aprox.1180-2020mm
Load capacity	2.0 kg / hook
Total weight	2.0 kg

INFUSION POLE
55° angled

29351



INFUSION POLE
90° angled

Regulating range approx. 1,270 -2,115 mm 29927



Material	Stainless steel
Tube diameter	25/18mm
Length of outer tube	1000mm
Angled	1x55°
Parallel offset	300mm
Height adjustment	Screw system
Bottle bar	Stainless steel 4 safety hooks
Regulating range	Aprox.1250-1800mm
Load capacity	2.0 kg / hook
Total weight	2.9 kg

Material	Stainless steel
Tube diameter	25/18mm
Angled	2x90°
Parallel offset	300mm
Height adjustment	Screw system
Bottle bar	Stainless steel 6 hooks
Load capacity	2.0 kg / hook
Total weight	3.0 kg

INFUSION POLE
Angled

With additional screw height adjustment as anti-swivel protection 21191



Material	Stainless steel
Tube diameter	25/18mm
Length of outer tube	600mm
Angled	2x45°
Parallel offset	approx. 350mm
Bottle holder	Stainless steel 4 hooks -2.0 kg / hook
Regulating range	Aprox.1180-1510mm
Total weight	1.45kg
Equipped with	wall rail clamp and wall support, for mouting on medical rail 25x10mm

INFUSION POLE
With integrated
pull-out stopper

19410



Material	Stainless steel
Tube diameter	25/18mm
Length of outer tube	800mm
Bottle bar	Stainless steel 4 hooks - 2,0kg /hook
Regulating range	Approx. 1000-1600mm
Total weight	2,03kg
Equipped with	2 wall rail clamps, for mounting on medical rails 25x10mm

3. INFUSION AND PUMP CARRIER SYSTEMS

INFUSION CARRIER SYSTEM

Two arms of 300mm + adjustable IV Pole

19868



Material	Stainless steel / Aluminium
Regulating range	1200-2050mm
Equipped with	2 pivoting support arms with universal clamp and a single-handed system infusion pole
Bottle holder	4 hooks
Support arm length	300mm
Total weight	Approx. 5,0kg

INFUSION CARRIER
SYSTEM
Double

25261



Material	Stainless steel /Aluminium
Regulating range	1200-2050mm
Equipped with	2 infusion poles with single-handed system for mounting on a central tube diameter 38mm
Bottle holder	4 hooks
Support arm length	300mm
Total weight	Approx. 7,9kg

DEVICE CARRIER
SYSTEM
For vertical rails

32045



Material	Stainless steel /Aluminium
Carrier tube length	700mm
Equipped with	To mount on vertical 25x10mm rails through height-adjustable brackets
Total weight	Approx. 2,3kg

EQUIPMENT CARRIER
SYSTEM

Two arms of 300 mm
with Pump Stand

18787



Material	Stainless steel / Aluminium
Carrier tube length	1000mm
Equipped with	One support tube and two universal clamps
2 rotating arms	300mm
Total weight	Approx. 2,9kg

EQUIPMENT CARRIER
TUBE

Rotatable for wall
mounting

23266



Material	Stainless steel / Aluminium
Carrier tube length	1000mm
Equipped with	One support tube and two wall brackets with two rotatable extension arms
Support arm length	200mm
Total weight	Approx. 3,0kg

DEVICE CARRIER
TUBE
For wall mounting
comfort

32921



Material	Stainless steel /Aluminium
Carrier tube length	1000mm
Equipped with	To mount on vertical 25x10mm rails through height-adjustable brackets
Total weigth	Approx. 2,3kg

4. EXAMINATION LAMPS

EXAMINATION LAMPS
with spring arm

29406



Light Source	LED
Colour temperature	5000°K
CRI	>96
Luminous intensity	1m - 35.000 lux 0.75m- 55.000 lux 0.5m - 65.000 lux
Regulation	25-100%
Average LED lifetime	50.000H
Luminous angle	6°
Power consumption	7W
Light field diameter to 1m d50	Ø100mm
Light field diameter to 0,5m d50	Ø80mm
Light field diameter to 1m d10	Ø170mm
Light field diameter to 0,5m d10	Ø0mm
Depth of illumination	337cm
Supply voltage	95-240 V 50-60HZ
Weight	6kg
Mounting	Rail
Thermal Protector	YES
Short circuit protection	YES

EXAMINATION LAMPS
DIN rail

Fixation DIN Rail 23246

Fixation Horizontal DIN Rail 900mm 17245

Fixation Vertical DIN Rail 18708

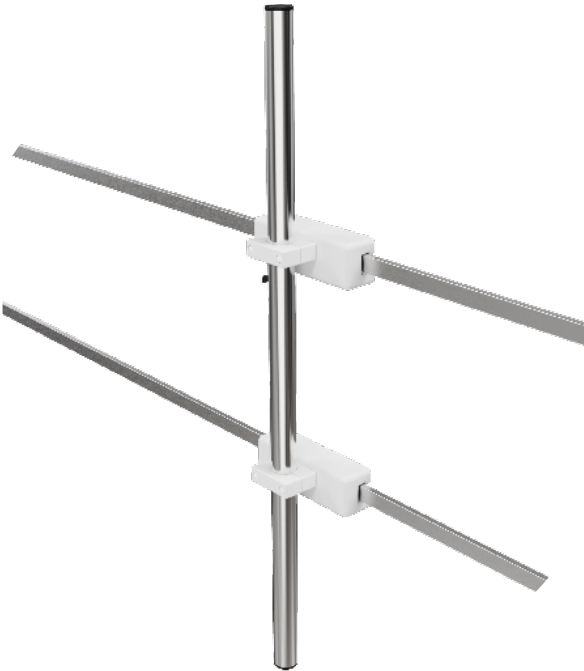


Light Source	LED
Colour temperature	5000°K
CRI	>96
Luminous intensity	1mm – 10.000 lux. 0,75m- 25.000 lux 0.5m – 40.000 lux
Light field diameter to 1m	Ø120mm
Average LED lifetime	50.000H
Luminous angle	6°
Power consumption	8W
Supply voltage	95-240 V 50-60HZ
Weight	6kg
Mounting	Rail
Thermal Protector	YES
Short circuit protection	YES

5. WALL RAIL CART

WALL RAIL CART
With carrier tube

22907



Carriage Material	Aluminium
Carriage tube Material	Stainless steel
Tube diameter	38mm
Carriage colour	white
Length of outer tube	1000mm
System load	75,0kg
Equipped with	2 complete carriages and one carrier tube

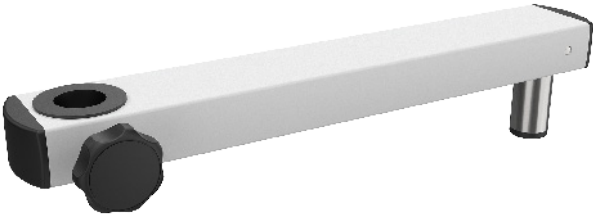
Caution: wall rails must be mounted exactly parallel to each other, with clamping lever brake on the upper carriage



6. SUPPORT ARM FOR MONITOR

SWIVEL ARM
With fixture pin 25mm
diameter

25973



Material	Aluminium
Centre distance	300mm
Fixture entry	For 25mm diameter round tube
Colour	White
Weight	Approx. 1,0kg

SWIVEL ARM FOR
INFUSION POLE
Clamp can be retrofit-

29662



Material	Stainless steel / Aluminium
Centre distance	300mm
Fixture entry	for 25mm diameter round tube
Colour	White
Load capacity	25kg

SWIVEL DOUBLE ARM
FOR INFUSION POLE
Clamp can be retrofit-

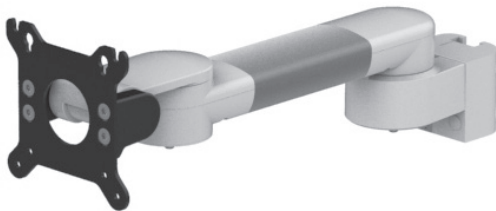
29352



Material	Stainless steel / Aluminium
Centre distance	300mm
Fixture entry	For 25mm diameter round tube
Colour	White
Load capacity	25kg

SUPPORT ARM FOR
MONITOR VESA 75/100
300mm

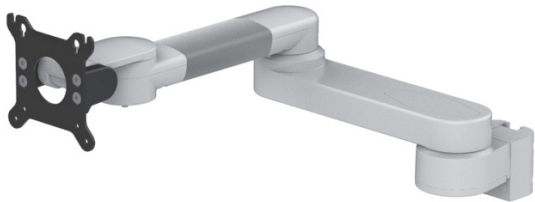
- On horizontal wall rail fixing 18kg 19088
- With vertical rail fixing 16613
- With vertical rail fixing + keyboard support 580+200mm 91239
- With 38mm diameter tube fixing 20614
- *Arm length 300mm
VESA 75/100
VESA 75/100 rotatable
VESA 75/100 spring supported



Material	Aluminium, PA6.6
Arm length	300x300mm*
Monitor adaptation	VESA 75/100
Max. load capacity support arm	18kg. / 39.7 lbs
Max. load monitor adaptation	18kg. / 39.7 lbs
Product weight	Arm type 300: 1.9 kg / 4.2 lbs 2.1 kg / 4.6 lbs VESA 75/100 rotatable
Colours to choose	Decorative parts RAL 5013 cobalt blue / RAL 7024 graphite grey Aluminum parts RAL 9016 traffic white / RAL 9002 grey white

SUPPORT DOUBLE
ARM VESA 75/100
300+300mm

- On horizontal wall rail fixing. 18kg. 31340
- With vertical rail fixing 91242
- With vertical rail fixing + with keyboard stand with retractable mouse tray 23999
- With 38mm diameter tube fixing 91243
- *Arm length 300x300mm
VESA 75/100
VESA 75/100 rotatable
VESA 75/100 spring supported



Material	Aluminium, PA6.6
Arm length	300x300mm*
Monitor adaptation	VESA 75/100
Max. load capacity support arm	18kg. / 39.7 lbs
Max. load monitor adaptation	18kg. / 39.7 lbs
Product weight	3.1 KG / 6.8 lbs VESA 75/100 3.2 KG / 7.1 lbs VESA 75/100 rotatable
Colours to choose	Decorative parts RAL 5013 cobalt blue / RAL 7024 graphite grey Aluminum parts RAL 9016 traffic white / RAL 9002 grey white

ADJUSTABLE SINGLE
ARM VESA 75/100
With magnetic shelf for
kewyboard 580x200mm

20463



Material	Aluminium, PA6.6
Monitor adaption	W-bracket VESA 75/100 and keyboard/mouse tray
Max. load capacity support arm	18kg / 39.7 lbs
Max. load monitor adaptation	18kg /39.7lbs
Product weight	Arm type 240 3.4 - 5.0 KG / 7.5 - 11.0 lbs (according to dimensions of keyboard tray)
	Arm type 300 3.6 - 5.1 KG / 7.9 - 11.2 lbs (according to dimensions of keyboard tray)
Keyboard tray	300 x 210 mm, 400 x 150 mm, 500 x 200 mm, 580 x 200 mm, 650 x 200 mm, 480 x 220 mm 11.8 x 8.3", 15.7 x 5.9", 19.7 x 7.9", 22.8 x 7.9", 25.6 x 7.9", 18.9 x 8.7"
Colours to choose	Decorative parts: RAL 5013 blue / RAL 7024 graphite grey Aluminium parts: RAL 9016 traffic white / RAL 9002 grey white

ADJUSTABLE DOUBLE
ARM VESA 74/100
With magnetic
shelf for keyboard
580x200mm

With 38mm diameter tube fixing 15kg 20823

*Arm lenght 240x240mm
VESA 75/100
VESA 75/100 spring supported

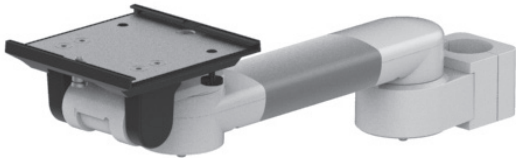
Arm length 300x300mm
VESA 75/100
VESA 75/100 spring supported



Material	Aluminium, PA6.6
Monitor adaption	W-bracket VESA 75/100 and keyboard/mouse tray
Max. load capacity support arm	18kg / 39.7 lbs
Max. load monitor adaptation	18kg /39.7lbs
Product weight	4.7 - 6.3 KG / 10.4 - 13.9 lbs
	(according to dimensions of keyboard tray)
Keyboard tray	300 x 210 mm, 400 x 150 mm, 500 x 200 mm, 580 x 200 mm, 650 x 200 mm, 480 x 220 mm 11.8 x 8.3", 15.7 x 5.9", 19.7 x 7.9", 22.8 x 7.9", 25.6 x 7.9", 18.9 x 8.7"
Colours to choose	Decorative parts: RAL 5013 blue / RAL 7024 graphite grey Aluminium parts: RAL 9016 traffic white / RAL 9002 grey white

SUPPORT ARM FOR
PIVOT 5"
300mm

On horizontal wall rail fixing **20654**
With 38mm diameter tube fixing **91244**



Material	Aluminium, PA6.6 RAL 9016 pure white / RAL 9002 grey white
Arm length	300mm / 11.8"
Monitor adaptation	5" plunge plate
Max. load capacity support arm	18 kg / 39.7 lbs
Max. load monitor adaptation	18 KG / 39.7 LBS
Product weight	Arm type 300: 1.9 kg/ 4.2 lbs
Colours to choose	Decorative parts RAL 5013 cobalt blue / RAL 7024 graphite grey. Aluminum parts RAL 9016 traffic white / RAL 9002 grey white

DOUBLE ARM SUPPORT
FOR MONITOR 5"
300+300mm

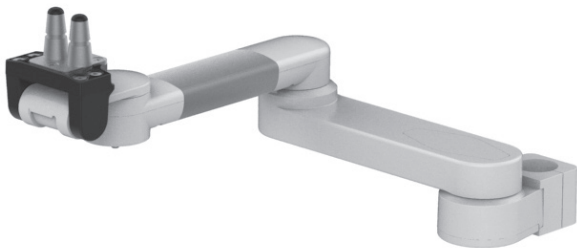
On horizontal wall rail fixing. 12.5kg. **22883**



Material	Aluminium, PA6.6
Arm length	300x300mm
Monitor adaptation	5" plunge plate
Max. load capacity support arm	18 kg / 39.7 lbs
Max. load monitor adaptation	18 KG / 39.7 lbs
Product weight	3.1kg / 6.8 lbs
Colours to choose	Decorative parts RAL 5013 cobalt blue / RAL 7024 graphite grey Aluminum parts RAL 9016 traffic white / RAL 9002 grey white

DOUBLE ARM SUPPORT
FOR MONITOR
300x300mm Philips

With 38mm diameter tube fixing 8kg 27171



Material	Aluminium, PA6.6
Arm length	300x300mm*
Monitor adaptation	Prepared to accept Philips table top mount
Max. load capacity support arm	18 kg / 39.7 lbs
Max. load monitor adaptation	18 kg / 39.7 lbs
Product weight	3.0 kg/ 6.6 lbs
Standards colours of plastic parts	Decorative parts RAL 5013 cobalt blue / RAL 7024 graphite grey Aluminium parts RAL 9016 traffic white / RAL 9002 grey white

7. TRAYS AND SHELVES

STORAGE TRAY FOR
MEDICAL RAIL
Functional, space-sa-
ving foldage

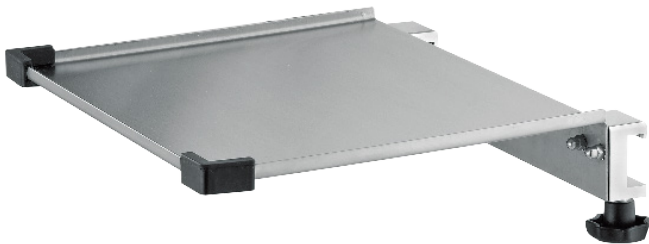
91245



Material	Stainless steel / Aluminium
Shelf dimensions	Approx. 375x232mm
Load Capacity	Approx. 10kg
For medical rail	25x10mm
Weight	Approx. 2,6kg

TRAY
With wall rail clamps,
with edge protection

91246

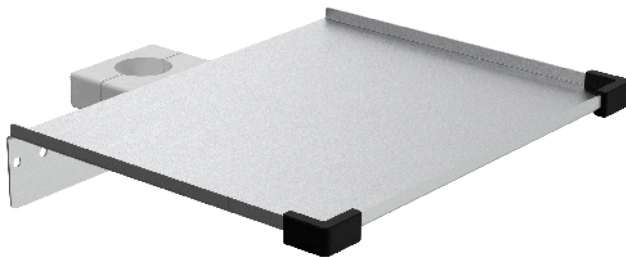


Material	Stainless Steel / Aluminium
Tray size	300x250mm
Load capacity	4.0kg
Weight	Approx. 2,75kg

DEVICE TRAY

For round tube 38mm diameter, with edge protection

24232



Material	Stainless steel / Aluminium
Size	300x250mm
Load capacity	4,0kg
Weight	Approx. 2,75kg

SHELF

With drawer

Weight approx. 10,1kg with 1 drawer 91247

With approx. 10,8kg with 1 drawer with lateral rails 91248

FOR WALL RAIL CART

With approx. 10,8kg for round tube 38mm diameter 22200

Weight approx. 10,8kg for round tube 38mm diameter with 1 drawer and lateral rails 23045



Tray Material	Stainless Steel
Drawer Material	Steel, white coated
Shelf size	540x360mm
Drawer size	420X310mm
Drawer height	120mm
Load capacity	40,0kg

SHELF
With 2 drawers

Weight approx. 14,7kg with 2 drawers 91252

With approx. 15,4kg with 2 drawer with lateral rails 91253

FOR WALL RAIL CART

With approx, 14,7kg with 2 drawers 91254

Weight approx. 15,4kg for round tube 38mm diameter with 2 drawer and lateral rails 91255



Try Material	Stainless steel
Drawer Material	Steel, white coated
Shelf size	540x360mm
Drawer size	420x310mm
Drawer height	120mm
Load capacity	40,0kg

SHELF
Without drawer

With two rail clamps and wall support 21267

With two wall rail clamps and wall support, with lateral rails 91258

FOR WALL RAIL CART

For round tube 38mm diameter 91259

For wall rail cart with lateral rails 91261



Material	Stainless steel
Shelf size	540x360mm
Load capacity	40,0kg
Weight	Approx. 6,0kg

8. BASKETS

BASKET
Accessory/cable basket
for mounting on arms
without height adjust-
ment

91262

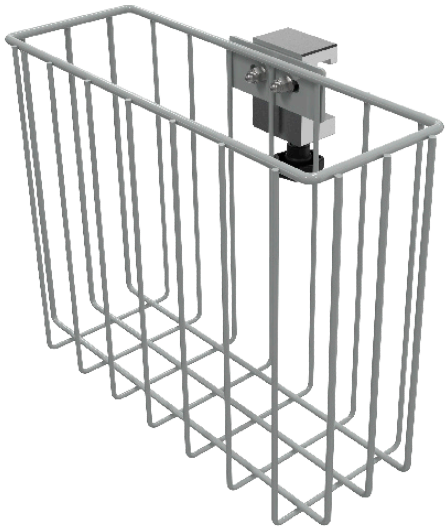


Material	Aluminium, PA6.6
Dimensions	Basket small: 200 x 150 x 100 mm/ 7.9 x 5.9 x 3.9" (W x D x H)
Maximum load	Basket small: 2.5 kg / 5.5 lbs

BASKET WITH CLAMP
With wall rail clamp, for
mounting on medical
rails 25x9mm

For wall rail clamp 13316

With clamp-set for round tube 91264



Basket Material	Steel / Coated
Clamp material	Aluminium
Colour	Light grey
Size	250x90x200mm (WxDxH)
Weight	Approx. 0,7kg

BASKET WITH 2
CLAMPS
With two wall rails
clamps, for moun-
ting on medical rails
50x12mm

13725

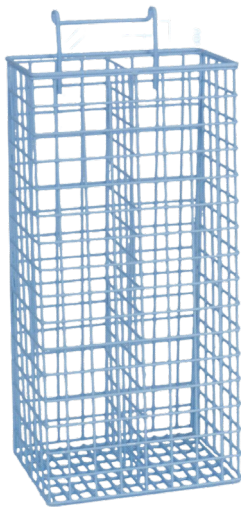


Material Korb	Steel / Coated
Clamp material	Aluminium
Colour	Light grey
Size	500x120x100mm (WxDxH)
Weight	Approx. 1,15kg

CATHETER BASKET

2boxes 200x90x600mm

17830



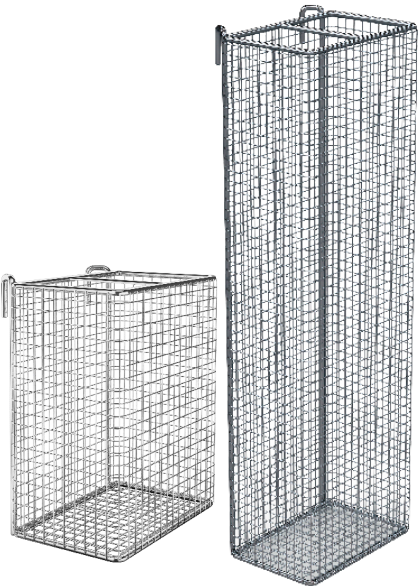
Material	Coated steel of high quality Rilsan®
Diameter	200x90x600mm

CATHETER BASKET FOR

MEDICAL RAIL

150 x 100 x 280mm (W x D x H) 91266

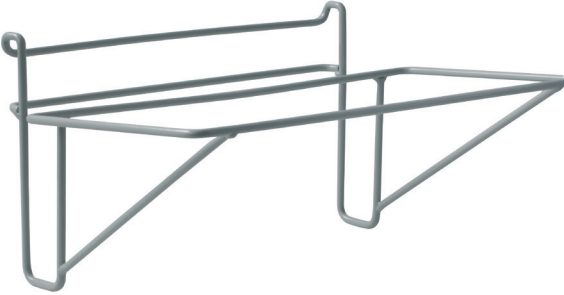
150 x 100 x 480mm (W x D x H) 91267



Material	Stainless steel / Electropolished
Mounting	Two hooks for medical rail
Weight	Approx. 0,5 / 0,8kg

COMPLETE RUBBISH BAG
HOLDER
320x160mm

25297



Material	Coated steel of high quality Rilsan® and plastics
Lengths	320x160mm

BASKET FOR 500CC
BOTTLE
Diameter 90mm

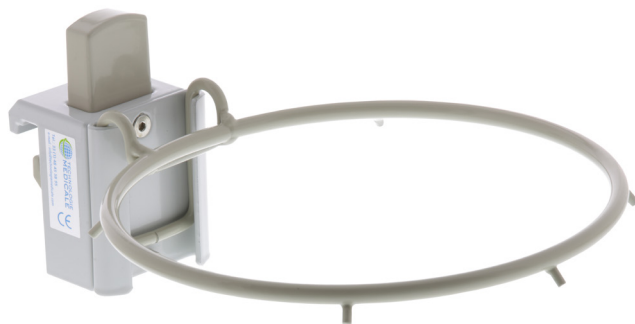
23540



Material	Coated steel of high quality Rilsan®
Diameter	Ø 90mm

COMPLETE RUBBISH
BAG HOLDER
Diameter 155mm

22554



Material	Coated steel and plastics
Diameter	Ø155mm

WASTE BAG HOLDER
With wall rail clamp
for mounting on me-
dical rails 25x10mm

91269



Material	Stainless steel / Aluminium
Size	245x385x185mm (WxHxD)
Special feature	Includes 3 waste bags
Weight	Approx. 2,0kg

9. ACCESSORIES

EXTENSION CLAMP
For mounting on round
tube (diameter 25 / 33,7
/38 mm)

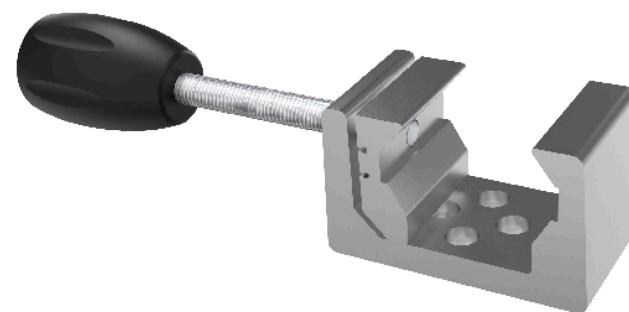
30531



Material	Aluminium
Distance medical rail - round tube	100mm
Colour	White
Weight	Approx. 0,5 kg

UNIVERSAL CLAMP
For medical rails and
round tubes up to 40mm
diameter, with four holes

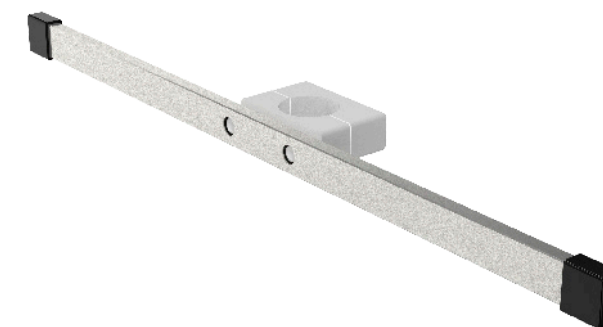
22985



Material	Aluminium
Diameter	Ø 25mm
Total weight	Approx. 0,4kg

MEDICAL RAIL
For round tube diameter
38mm, full length usable

91272



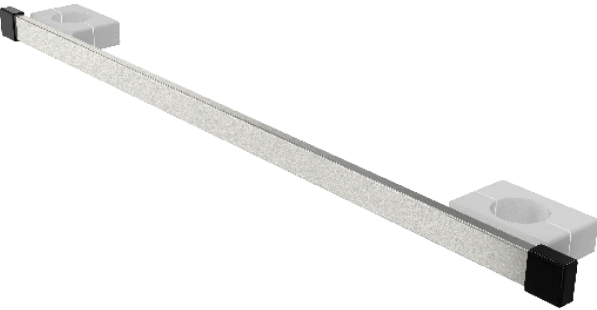
Material	Stainless steel / Aluminium
Profile	25x10mm
Length	58mm
Weight	Approx. 0,9 kg

MEDICAL RAIL

600mm with 2x clamp-sets for 38mm diameter round tube

22614

For rail length 400mm and center diameter 300mm
22617



Material	Stainless steel/ Aluminium
Profile	25x10mm
Centre distance	500mm
Rail length	600mm
Weight	Approx. 1,3 kg

MEDICAL RAIL

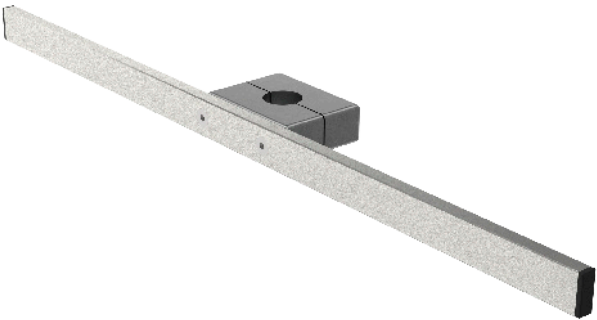
Retrofit mounting on round tubes 25/38mm diameter, usable length beside the clamp 235mm each

21827

For round tube diameter 38mm and 558mm length
91274

For round tube diameter 25mm 91276

For technical rail 300x30x10mm 24586



Material	Stainless steel
Profile	25x10mm
Length	350mm
Load capacity	Approx. 8,0kg
Weight	Approx. 0,9kg

MEDICAL RAIL

Double-sided 400 mm
with 2xclamp-sets for
round tube 38mm dia-
meter

22612

With 500mm centre distance and 600mm rail length
21828

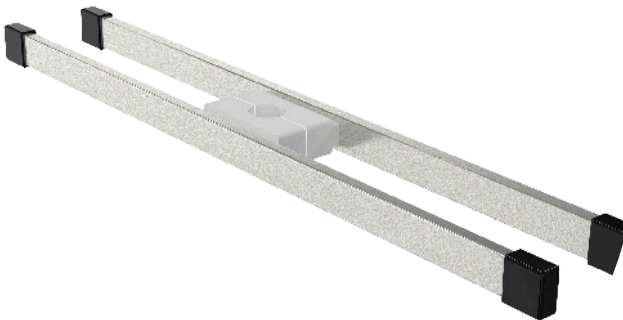


Material	Stainless steel / Aluminium
Profile	25x10mm
Centre distance	300mm
Rail length	400 mm
Weight	1,9 kg

DOUBLE RAIL

For round tube 25mm
diameter

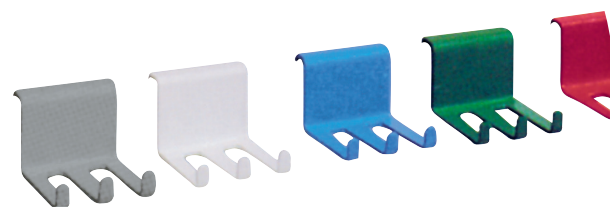
25028



Material	Stainless steel / Aluminium
Rail length	558mm
Optional	For rounf tube 33,7mm / 30mm diameter
Weight	Approx. 1,3 kg

TUBE HOLDERS

20879

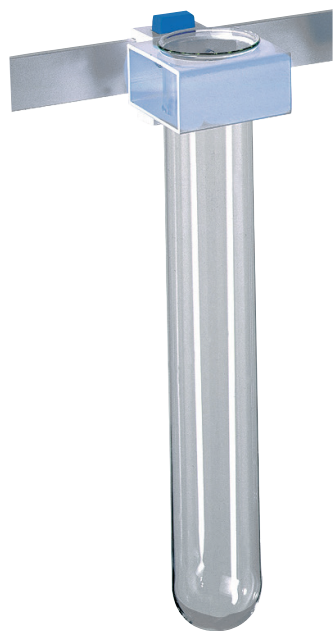


Material
Thick rail

Coated steel of high quality Rilsan®
Ø 10mm

HOLDER FOR CATHETER
FOR 1 TUBE ONLY

91279



Material

Coated steel of high quality Rilsan® with universal clamps

POLYCARBONATE TUBE
Diameter 52mm
H500mm

91281



Material	Tube	Polycarbonate
Diameter	Ø 52mm	
Length	500mm	

HOOK STRIP
To mount on 38mm
diameter round tube

2 hooks 91282

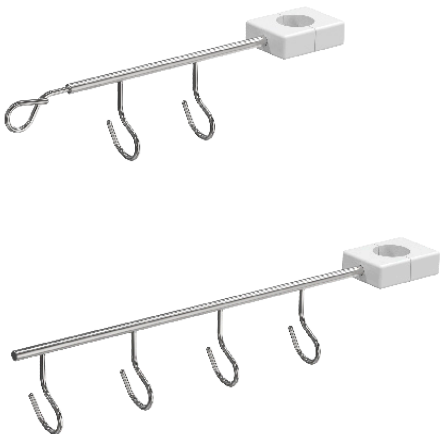
2 hooks + 1 horizontal hook 91283

3 hooks 91284

3 hooks + 1 horizontal hook 91285

4 hooks 29275

4 hooks + 1 horizontal hook 91287



Material	Stainless steel / Aluminium
Mounting	With double-clamp
Colour	White

PUMP HOLDER

With wall rail clamp for mounting on medical rails 25x10mm

21177



Material	Stainless Steel / Aluminium	
Tube diameter	25mm	
Length	500mm	
Weight	Ca. 0,95kg	

www.tediselmedical.com
info@tedisel.com

Sant LLuc, 69-81
08918 Badalona, BARCELONA, Spain
Tel. +34 93 399 20 58



tediselmedical

AN EXPERT INSIGHT INTO HOSPITAL EQUIPMENT

